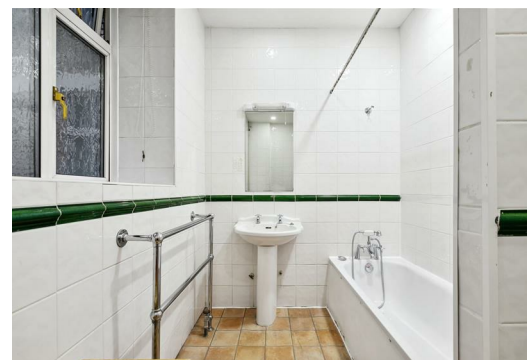


TATES

020 7602 6020



North End House, Fitzjames Avenue, London W14 0RX

£950,000

- Gated Development
- Second Floor (with lift)
- Parking (by arrangement)
- H&F Council Tax Band: F
- Short Walk To Kensington High Street
- 24 hour Security
- Communal Gardens
- Share of Freehold
- West Kensington Tube (District Line)

NORTH END HOUSE, FITZJAMES AVENUE, W14

Approximate gross internal area
1131 sq ft / 105.07 sq m

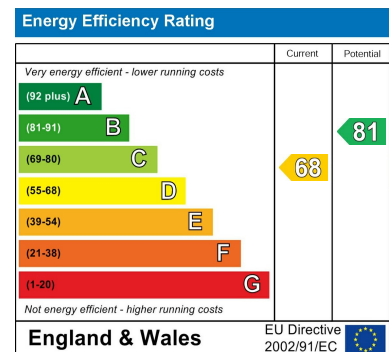
Key :
CH - Ceiling Height



SECOND FLOOR

Not to scale, for guidance only and must not be relied upon as a statement of fact.
All measurements and areas are approximate only

Whilst these particulars are produced in good faith and are believed to be correct, no guarantee is given, nor any responsibility accepted, by Tates nor by any of its representatives, for their accuracy. The particulars do not constitute part of any offer or contract, and it is recommended that such things as measurements, condition, structure, services, appliances, fixtures and fittings and facilities are all independently assessed by the prospective purchaser or renter of the subject property prior to committing to any contract.



135 Hammersmith Road, West Kensington, London W14 0QL

mail@tatesestates.co.uk

tatesestates.co.uk

Tates (Agents) Ltd. Registered in England and Wales No. 02356337
Registered Office: Imperial House, 8 Keane Street, London WC2B 4AS

